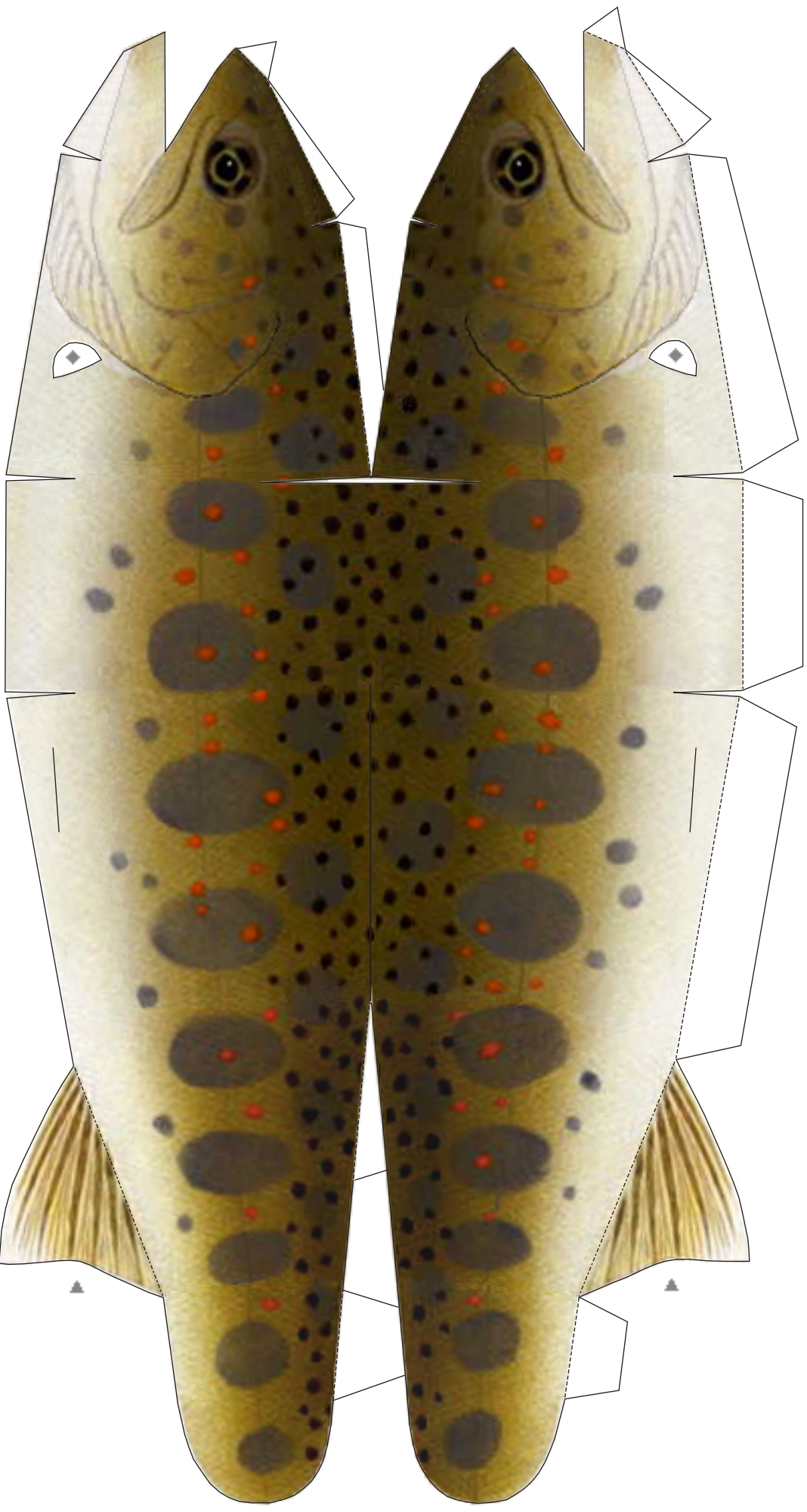


Paper Trout (Amago) -1



Cut out along outer edges, Black lines.

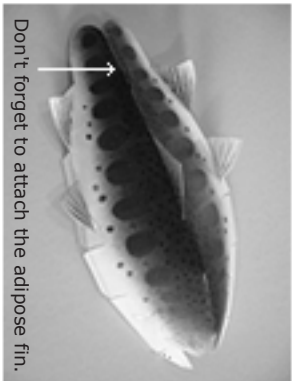
----- is mountain fold. ----- is valley fold.

▲ Glue reverse side.

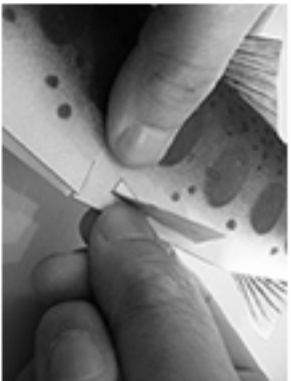
◆ Glue spots. Don't cut out.

Copyright (c) 2013 by Yoshikazu Fujioka. All rights reserved.

<Instructions>



1. Make all fins first.
2. Cut out the body.
3. Attach the fins other than the pectoral fin, caudal fin.
4. Glue the back side in order from the caudal portion.



5. Glue the belly side from the caudal portion.
6. Attach the caudal fin.



7. Glue the belly side while roundness is given with a ball-point, etc.

Paper Trout (Amago) -2

